

**SITRA**<sup>®</sup>

SINCE 1983



*Our Innovation  
Excites You to Enjoy Cooking.*



# Kitchen

**= Selection =**

Kitchen Scissors  
Kitchen Knife  
Ceramic Knife

Peeler  
Serving Spoon  
Kitchen Tools

# Kitchen Scissors

## Selection

Legends ( Marks ) for Multi Function Scissors



### < Cutting >

We have great PRIDE & CONFIDENCE of smooth feeling to cut, even if it's a basic type of scissors.



### < Bottle Opener >

You can open bottles by using the blade or handle of the product.



### < Nuts Cracker >

Large mouth at center of scissors for cracking nuts or shell etc. Also for opening the tightly closed cap.



### < Can Opener >

Useful bar to use as the lever for hard work, such as opening the pull tab of can / screw driver etc.



### < Scale Remover >

Large rectangle teeth for removing scale of fish.



### < Separate Type >

You can divide the scissors left / right part for easy washing and keep it clean.



### < Black Titanium Coating >

Effects of black Titanium coating are Anti Rust, Fine Sharpness, and Long Life. 10 years guarantee of quality.



### < TPE ( TPR ) Soft Grip >

Soft material : TPE (Thermoplastic Elastomers) is nice feeling & Non-slip gripping.



### < Safety Case ( Cover ) >

Case or Cover to protect you and keep the scissors safely.



### < Safety Lock >

Safety Lock to keep the scissors closing, not to open it unintentionally.

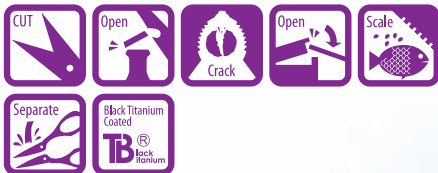


### < Special Functions >

In addition to the above features, our scissors have many Innovated & Unique functions. There is the explanation of it on each page with this Icon.

# 【CRYSTAL】

## 5-in-1 Multi Purpose Kitchen Scissors



Crystal Clear Grip by Injection & Insulation Technology.  
For Home Use & Gift.



Item No. : 949309



L=225mm T=3.0mm

Blade / Stainless Steel +Black Titanium Coated Handle / ABS + AS

# 【5-in-1 TPE】

## 5-in-1 Multi Purpose Kitchen Scissors



TPE (Thermoplastic Elastomers) Soft Grip :  
Nice feeling & Non-Slip Gripping.  
For your comfortable kitchen life.



Item No. : 619302



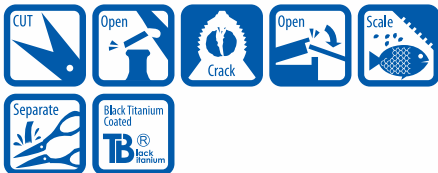
L=225mm T=3.0mm

Blade / Stainless Steel +Black Titanium Coated Handle / TPE

Designed in Japan Patented US/D646940S EUI/00123098-0002

# 【5-in-1 ABS】

## 5-in-1 Multi Purpose Kitchen Scissors



Item No. : 529402



L=225mm T=3.0mm Blade / Stainless Steel +Black Titanium Coated  
Handle / ABS or Nylon + Glass Fiber ( Option )

# 【3-in-1 COMPACT】

## 3-in-1 Multi Purpose Kitchen Scissors



Simple & Compact & Quality  
Very Useful Scissors  
in Your Kitchen & Home



Kitchen Scissors

Item No. : 615605



L=215mm T=3.0mm

Blade / Stainless Steel +Black Titanium Coated Handle / ABS + TPR

Designed in Japan PAT.P. US / EU

# (LEFT HANDED)

## 4-in-1 Left Hand Use Kitchen Scissors



Item No. : 615605



L=200mm T=3.0mm

Blade / Stainless Steel +Black Titanium Coated Handle / ABS + TPR

6 *Designed in Japan* PAT. P. US / EU

# (PET CAP)

**5-in-1** Multi Purpose Kitchen Scissors



Special Tip & Blade for Cutting PET package or Removing Cap etc.



**Item No. : 617402**

L=215mm T=3.0mm  
Blade / Stainless Steel Handle / ABS

*Designed in Japan*



# (THUMB FIT)

## 5-in-1 Multi Purpose Kitchen Scissors

Kitchen Scissors



Round Designed Thumb Ring & Grip to Fit Your Fingers.



Item No. : 528108



L=220mm T=2.0mm

Blade / Stainless Steel +Black Titanium Coated Handle / ABS

# 【Long POULTRY】

## Long & Wide Poultry Scissors



Kitchen Scissors



Extra Fine Blade for Cutting  
Meat : Chicken with Soft Bone.  
Seafood : Fish with Bone / Shrimp with Shell etc.  
Also Good for BBQ.

**Item No. : 717010**

L=245mm T=3.0mm

Blade / Stainless Steel +Black Titanium Coated Handle / ABS + TPR

Designed in Japan Patented US/D651493S EU/001800434-0001

# 【 Slim LOBSTER 】

## Slim & Sharp Crab & Lobster Scissors



Kitchen Scissors



Extra slim blade for cutting  
Seafood : Fish with bone  
Shrimp, Crab, Lobster with shell etc.  
Slim blade is suitable for stubbing inside the shell.

**Item No. : 717135**

L=240mm T=3.0mm Blade / Stainless Steel +Black Titanium Coated  
Handle / ABS + TPR

# 【Basic LOBSTER】

## Pointy & Wide Crab & Lobster Scissors



Finger Rest



Kitchen Scissors



Wide & Pointy Blade for Easy Cutting of Chicken, Crab & Lobster etc.



**Item No. : 615740**

L=225mm T=3.0mm

Blade / Stainless Steel +Black Titanium Coated Handle / ABS + TPR

Designed in Japan Patented US/D646941S EU/001230981-0003

# 【Short **POULTRY**】

## Short & Powerful Poultry Scissors



Extra Thick & Powerful Blade for Cutting  
Meat : Chicken with Soft Bone.  
Seafood : Fish with Bone / Shrimp with Shell etc.  
Also Good for BBQ.

**Item No. : 615525**

L=225mm T=3.5mm

Blade / Stainless Steel +Black Titanium Coated Handle / ABS + TPR

12 *Designed in Japan* Patented US/D646944S EU/001243513-0001

# 【Forged POULTRY】

## All Stainless Poultry Scissors



- TOP Grade Poultry Scissors  
- One Piece All Stainless Poultry Scissors  
- Stylish Hollow Grip  
- Thick & Long Blade  
- Easy Wash : Separate Type



Safety Lock



Separate



Extra Fine Blade for Cutting  
Meat : Chicken with Soft Bone  
Seafood : Fish with Bone / Shrimp with Shell etc.  
Also Good for BBQ.

**Item No. : 615811**

L=240mm T=4.0mm

Blade / Stainless Steel Handle / Stainless Steel

Designed in Japan Patented US/D642877S EU/001248504-0001

# 【 Basic ECO-LEAF 】

## Power Saving Kitchen Scissors



Because of blade curve, keeping the same degree of blade from the beginning to the end for easy cutting.

**Item No. : 845104**

L=190mm T=2.5mm

Blade / Stainless Steel Handle / ABS + TPR

# 【Tong ECO-LEAF】

## Power Saving Kitchen Scissors



Kitchen Scissors



-1



The Blade Tip is Tong for Picking up Retort Packed Food from Boiling Water, Grilled Food from Oven Range etc.



-2



Because of blade curve, keeping the same degree of blade from the beginning to the end for easy cutting.

**Item No. : 845203**

L=205mm T=2.0mm

Blade / Stainless Steel Handle / ABS + TPR

Designed in Japan Patented US/PAT. P. EU/002430769-0002



# 【Powerful RETORT】

## 3-in-1 Multi Purpose Kitchen Scissors



The Blade Tip is Tong for Picking up Retort Packed Food from Boiling Water , Grilled Food from Oven Range etc.



Item No. : 845140

L=200mm T=2.5mm  
Blade / Stainless Steel Handle / ABS

16 *Designed in Japan*

# 【 Basic RETORT 】

## 4-in-1 Multi Purpose Kitchen Scissors



The Blade Tip is Tong for Picking up Retort Packed Food from Boiling Water, Grilled Food from Oven Range etc.



Item No. : 220303



L=215mm T=2.0mm  
Blade / Stainless Steel Handle / ABS

Designed in Japan

# 【Twin Color PIZZA】

## 4-in-1 Special Kitchen Scissors



Safety Case



Unique 4 Functions for Pizza Cutting & Home Use



Scissors

Cutter

Grater

Crack

Item No. : 845732

L=210mm T=2.5mm

Blade / Stainless Steel Handle / ABS + TPR Grater / ABS

18 *Designed in Japan* Patented US/PAT.P. EU/002430769-0003

# (Single Color PIZZA)

## 4-in-1 Special Kitchen Scissors



Scissors



Crack



Cutter



Grater



Separate



Safety Case



Safety Case

Kitchen Scissors



Unique 4 Functions for Pizza Cutting & Home Use



Scissors



Cutter



Grater



Crack

Item No. : 845332

L=210mm T=2.5mm

Blade / Stainless Steel Handle / ABS Grater / ABS

Designed in Japan

# 【CHEESE】

## 3-in-1 Special Kitchen Scissors



Special Designed Jagged Blade for Cutting CHEESE.  
Use as SCISSORS / KNIFE / FORK.



Scissors



Knife



Fork

Item No. : 715841

L=215mm T=2.0mm

Blade / Stainless Steel +Black Titanium Coated Handle / ABS + TPR

20

Patented US/D680836S EU/001935214-0002 *Designed in Japan*

# 【SHREDDER】

## 5-Blades Kitchen Scissors



Kitchen Scissors



Unique 5 Blades  
For Shredding / Cutting Herbs etc.



Item No. : 527919

L=195mm T=1.0mm

Blade / Stainless Steel +Black Titanium Coated Handle-Case / ABS

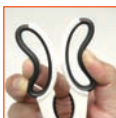
Designed in Japan

# ( FINGER FLEX )

## 3-in-1 Multi Purpose Kitchen Scissors



Special Soft Grip  
to Fit Your Finger.  
Comfortable & Less Fatigue



**Finger Flex**®



Item No. : 617342



L=205mm T=2.5mm

Blade / Stainless Steel +Black Titanium Coated Handle / ABS + TPR

# 【NON-SLIP】

## Smooth Cut Kitchen Scissors

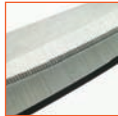


Unique Blade Kitchen Scissors.

- Wave & Teeth Blade for Perfect non-Slip Cutting
- Ergonomic Design Grip for Easy Fit to Your Finger



Wave



Teeth



Item No. : 736606



L=185mm T=2.0mm

Blade / Stainless Steel Handle / ABS

Designed in Japan PAT. P. US / EU



# 【HERB】

## 3-in-1 Herb Cutting Kitchen Scissors



Clipping Leaves



Item No. : 657208



L=190mm T=3.0mm  
Blade / Stainless Steel Handle / ABS

# 【STUD】

## 3-in-1 Multi Purpose Kitchen Scissors



Kitchen Scissors

Item No. : 220601



L=205mm T=2.0mm

Blade / Stainless Steel +Black Titanium Coated Handle / ABS

Designed in Japan PAT.P. US / EU

# 【FLAT Rivet】

## Extra Smooth Kitchen Scissors



The New Fine Rivet  
Makes Cutting More  
Smoother.



2 Different Types Blade Available



Wave



Straight

**Item No. : 719710**

L=200mm T=2.0mm

Blade / Stainless Steel Handle / ABS + TPR

26 *Designed in Japan* Patented US/D7035075 EU/002240952-001

# 【STRIPE】

## Compact Kitchen Scissors



One of the Most Compact Size Separate Type  
Kitchen Scissors in Our Line Up.  
Convenient in Everyday Kitchen Life.



Item No. : 719907



L=195mm T=2.0mm  
Blade / Stainless Steel Handle / ABS + TPR

*Designed in Japan*

# 【DISPOSAL】

## 4-in-1 Multi Purpose Kitchen Scissors



Item No. : 529202



L=200mm T=2.0mm  
Blade / Stainless Steel Handle / ABS

# 【 FANCY TWIN 】

## Standard Kitchen Scissors



Basic Grade Kitchen Scissors

- Simple Functions
- Twin Color Design Grip
- for All Purpose Daily Use



Kitchen Scissors

Item No. : 615140



L=200mm T=2.0mm

Blade / Stainless Steel + Black Titanium Coated Handle / ABS

Designed in Japan

# 【Long-Run BASIC】

## Standard Kitchen Scissors



Basic Grade Kitchen Scissors  
- Simple Functions  
- The Longest Seller Standard  
- for All Purpose Daily Use



Bottle Opener



Item No. : 220103



L=210mm T=1.5mm  
Blade / Stainless Steel Handle / ABS

30 *Designed in Japan*

# 【Fit Grip BASIC】

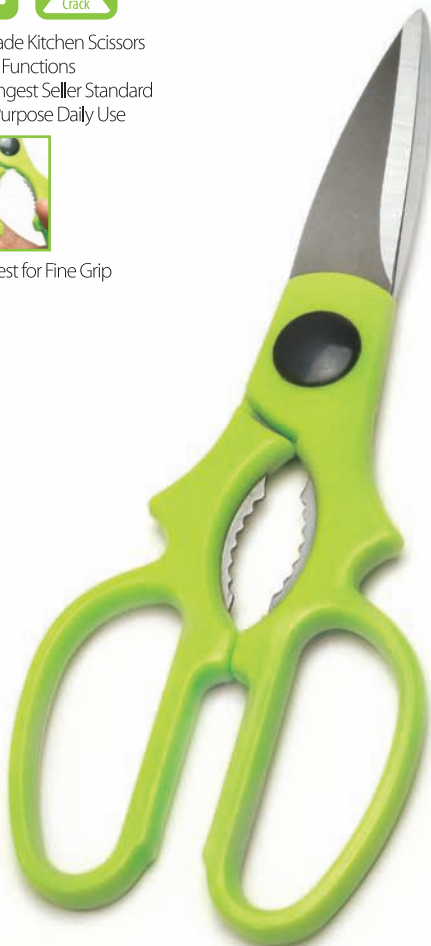
## Standard Kitchen Scissors



- Basic Grade Kitchen Scissors
- Simple Functions
  - The Longest Seller Standard
  - for All Purpose Daily Use



Finger Rest for Fine Grip



Item No. : 849004



L=200mm T=1.5mm  
Blade / Stainless Steel Handle / ABS

Designed in Japan



# 【FLAT-WIDE】

**3-in-1** Multi Purpose Kitchen Scissors

Item No. : 527935



L=225mm T=2.0mm  
Blade / Stainless Steel Handle / ABS + TPR

Kitchen Scissors

# 【BUTTON】

**Simple** Kitchen Scissors

Item No. : 527902



L=205mm T=2.0mm  
Blade / Stainless Steel Handle / ABS

# 【STREAMLINE】

**Simple** Kitchen Scissors

Item No. : 527108



L=190mm T=2.0mm  
Blade / Stainless Steel Handle / ABS

*Designed in Japan*

# 【FLAT-WIDE】

**3-in-1** Multi Purpose Kitchen Scissors

Item No. : 527935



L=225mm T=2.0mm  
Blade / Stainless Steel Handle / ABS + TPR

Kitchen Scissors

# 【BUTTON】

**Simple** Kitchen Scissors

Item No. : 527902



L=205mm T=2.0mm  
Blade / Stainless Steel Handle / ABS

# 【STREAMLINE】

**Simple** Kitchen Scissors

Item No. : 527108



L=190mm T=2.0mm  
Blade / Stainless Steel Handle / ABS

*Designed in Japan*

# 【PIN HOLE】

**Simple** Kitchen Scissors

Item No. : 528008



L=215mm T=2.0mm  
Blade / Stainless Steel Handle / ABS

# 【ROUNDISH】

**Simple** Kitchen Scissors

Item No. : 220226



L=205mm T=2.0mm  
Blade / Stainless Steel Handle / ABS

# Kitchen Knives

## Selection

### Legends ( Marks ) for Multi Function Knives



Stainless  
Steel



#### < Stainless Steel Blade >

Our High-Grade Stainless Steel Comes from JAPAN / TAIWAN. Dedicated for Only Blade / Edge.



Ceramic



#### < Fine Ceramic Blade >

Ceramic Knife Blade is "Zirconia" Type ; the Highest Hardness and Toughness in Every Ceramic Families.



One  
Piece



#### < One Piece Type >

One Piece Stainless Steel Kitchen Knife with Hollow Grip.  
- No Dust in the Slit between Blade and Grip. Easy Wash & Hygienic.



Black Titanium  
Coated  
**TB**®  
Black  
Titanium



#### < Black Titanium Coating >

Effects of black Titanium coating are Anti Rust, Fine Sharpness, and Long Life. 10 years guarantee of quality.



Soft Grip

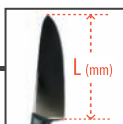


#### < TPE ( TPR ) Soft Grip >

Soft material : TPE (Thermoplastic Elastomers) is nice feeling & Non-slip gripping.



Blade Size  
**180**  
mm



#### < Blade Size >

Blade Size is the Length of Edge. This is about Size to Help Your Understanding.  
( Tolerance  $\pm 5$ mm )



Special

#### < Special Functions >

In addition to the above features, our knives have many Innovated & Unique functions. There is the explanation of it on each page with this Icon.



#### < OEM Logo on Blade >

OEM Logo Welcome.  
Our Logo is not Printing, but Laser Engraving. Never Come Out and Dishwasher Safe.

# 【CRYSTAL】

GYUTOH  
200

## Clear Grip Kitchen Knife



Crystal Clear Grip by Injection & Insulation Technology.

For Home Use & Gift.



OEM Logo  
Laser Engraving  
(Welcome)



Item No. : 949405

L ( Blade ) = Approx. 200mm T = 2.0mm

Blade / Stainless Steel + Black Titanium Coated Handle / ABS + AS

36 *Designed in Japan*

# 【 Basic TPE 】 **SANTOKU 160**

## Soft Grip Kitchen Knife



TPE Soft Grip for  
Comfortable Feeling & Non-Slip.  
(ABS Hard Grip Available.)



OEM Logo  
(Laser Engraving)  
Welcome



Santoku-160  
No.917393

### All Line Up

- PETTY-90 No.917591
- FRUITS-140 No.917592
- SANTOKU-160 No.917393
- NAKIRI-160 No.917595
- GYUTOH-200 No.917494
- SASHIMI-210 No.917596



### Item No. : 917393

L ( Blade ) = Approx. 160mm T = 2.0mm  
Blade / Stainless Steel + Black Titanium Coated Handle / ABS + TPE

Designed in Japan

# 【Basic TPE】 FROZEN 200

## Soft Grip Kitchen Knife



Serrated Blade for Smooth Cutting of Frozen Food



Usage Image



Special Blade for Cutting Frozen Food

Item No. : 917698

L ( Blade ) = Approx. 200mm T = 2.0mm  
Blade / Stainless Steel Handle / ABS + TPE

# (Basic TPE) **BREAD 200**

## Soft Grip Kitchen Knife



Jagged Blade for Smooth Cutting of Bread



Kitchen Knives

Usage Image



Special Blade for Cutting All Kinds of Bread

**Item No. : 917699**

L ( Blade ) = Approx. 200mm T = 2.0mm  
Blade / Stainless Steel Handle / ABS + TPE

*Designed in Japan*



# [Oval] SANTOKU 160

## Soft Grip Kitchen Knife



Oval Shape Soft Grip with Twin Color Injection Design.  
Soft Feeling & Non-Slip Grip.



Easy to Hook



SANTOKU-160  
No.919303

### All Line Up

- PETTY-90 No.919301
- FRUITS-140 No.919302
- SANTOKU-160 No.919303
- NAKIRI-160 No.919305
- GYUTOH-200 No.919304
- SASHIMI-210 No.919306



Item No. : 919303

L ( Blade ) = Approx. 160mm T = 2.0mm

Blade / Stainless Steel + Black Titanium Coated Handle / ABS + TPE

# (STRIPE) **PETTY 90**

## Non-Slip Grip Kitchen Knife



Twin Color Stripe Injection TPE Grip for Soft Feeling & Non-Slip.



Stripe Non Slip Grip



Kitchen Knives

Usage Image



Petty Knife Blade for Cutting / Peeling Fruits & Vegetable.

**Item No. : 917691**

L ( Blade ) = Approx. 90mm T = 2.0mm

Blade / Stainless Steel + Black Titanium Coated Handle / ABS + TPE

Designed in Japan PAT. P. US / EU

# (STRIPE)

FRUITS  
140

## Non-Slip Grip Kitchen Knife



Twin Color Stripe Injection TPE Grip for Soft Feeling & Non-Slip.



Stripe Non Slip Grip



Usage Image



Fruits Knife Blade for Cutting Fruits & Vegetable.

Item No. : 917692

L ( Blade ) = Approx. 140mm T = 2.0mm

Blade / Stainless Steel + Black Titanium Coated Handle / ABS + TPE

# (STRIPE) **SANTOKU 160**

## Non-Slip Grip Kitchen Knife



Twin Color Stripe Injection TPE Grip for Soft Feeling & Non-Slip.



Stripe Non Slip Grip



Kitchen Knives

### Usage Image



SANTOKU Blade for Cutting Meat / Fish / Vegetable.

**Item No. : 917690**

L ( Blade ) = Approx. 160mm    T = 2.0mm  
Blade / Stainless Steel + Black Titanium Coated    Handle / ABS + TPE

Designed in Japan    PAT. P. US / EU

# (STRIPE)

**GYUTOH  
200**

## Non-Slip Grip Kitchen Knife



Twin Color Stripe Injection TPE Grip for Soft Feeling & Non-Slip.



Stripe Non Slip Grip



Usage Image



GYUTOH (Chef) Blade for Cutting Large Size Meat / Fish / Vegetable.

**Item No. : 917694**

L ( Blade ) = Approx. 200mm T = 2.0mm

Blade / Stainless Steel + Black Titanium Coated Handle / ABS + TPE

# (STRIPE) NAKIRI 160

## Non-Slip Grip Kitchen Knife



Twin Color Stripe Injection TPE Grip for Soft Feeling & Non-Slip.



Stripe Non Slip Grip



Kitchen Knives

Usage Image



NAKIRI Blade for Cutting All Kinds of Vegetable.

Item No. : 917695

L ( Blade ) = Approx. 160mm T = 2.0mm  
Blade / Stainless Steel + Black Titanium Coated Handle / ABS + TPE

Designed in Japan PAT. P. US / EU

# 【STRIPE】

SASHIMI  
210

## Non-Slip Grip Kitchen Knife



Twin Color Stripe Injection TPE Grip for Soft Feeling & Non-Slip.



Stripe Non Slip Grip



Usage Image



Sashimi Blade for Cutting  
All Kinds of Fish.

Item No. : 917696

L ( Blade ) = Approx. 210mm T = 2.0mm

Blade / Stainless Steel + Black Titanium Coated Handle / ABS + TPE

46 *Designed in Japan* PAT. P. US / EU

# 【FORGED】

**SANTOKU  
180**

## Hollow Grip Kitchen Knife



One Piece Stainless Steel Kitchen Knife with Hollow Grip.  
- No Dust in the Slit between Blade and Grip. Easy Wash & Hygienic.



Kitchen Knives

Usage Image



SANTOKU Blade for Cutting  
Meat / Fish / Vegetable.

**Item No. : 917703**

L ( Blade ) = Approx. 180mm T = 2.0mm  
Blade-Handle / Stainless Steel

*Designed in Japan*



# 【FORGED】

**GYUTOH  
220**

## Hollow Grip Kitchen Knife



One Piece Stainless Steel Kitchen Knife with Hollow Grip.  
- No Dust in the Slit between Blade and Grip. Easy Wash & Hygienic.

Kitchen Knives



Usage Image



GYUTOH (Chef) Blade for Cutting Large Size Meat / Fish / Vegetable.

**Item No. : 917705**

L ( Blade ) = Approx. 220mm T = 2.0mm  
Blade-Handle / Stainless Steel

# 【FORGED】

**NAKIRI  
160**

## Hollow Grip Kitchen Knife



One Piece Stainless Steel Kitchen Knife with Hollow Grip.  
- No Dust in the Slit between Blade and Grip. Easy Wash & Hygienic.



Kitchen Knives

Usage Image



NAKIRI Blade for Cutting  
All Kinds of Vegetable.

**Item No. : 917704**

L ( Blade ) = Approx. 160mm T = 2.0mm  
Blade-Handle / Stainless Steel

*Designed in Japan*

# 【FORGED】

SASHIMI  
240

## Hollow Grip Kitchen Knife



One Piece Stainless Steel Kitchen Knife with Hollow Grip.  
- No Dust in the Slit between Blade and Grip. Easy Wash & Hygienic.

Kitchen Knives



Usage Image



Long Sashimi Blade for Cutting  
All Kinds of Fish etc.

Item No. : 917706

L ( Blade ) = Approx. 240mm T = 2.0mm  
Blade-Handle / Stainless Steel

# 【POLKA】

**SANTOKU  
160**

## Hollow Grip Kitchen Knife



One Piece Stainless Steel Kitchen Knife with Hollow Grip.

- No Dust in the Slit between Blade and Grip. Easy Wash & Hygienic.



**Item No. : 914333**

L ( Blade ) = Approx. 160mm T = 2.0mm  
Blade-Handle / Stainless Steel

52 *Designed in Japan*

# 【POLKA】

GYUTOH  
170

## Hollow Grip Kitchen Knife



One Piece Stainless Steel Kitchen Knife with Hollow Grip.  
- No Dust in the Slit between Blade and Grip. Easy Wash & Hygienic.



Kitchen Knives

Item No. : 914334

L ( Blade ) = Approx. 170mm T = 2.0mm  
Blade-Handle / Stainless Steel

*Designed in Japan*

# 【POLKA】

NAKIRI  
160

## Hollow Grip Kitchen Knife



One Piece Stainless Steel Kitchen Knife with Hollow Grip.

- No Dust in the Slit between Blade and Grip. Easy Wash & Hygienic.



Item No. : 914335

L ( Blade ) = Approx. 160mm T = 2.0mm  
Blade-Handle / Stainless Steel

# 【PIZZA Cera】

## Soft Grip Ceramic Knife



TPE Soft Grip with Stainless Steel End.  
Refined Design Based on Ergonomics.



Black Blade Available.



Kitchen Knives

Usage Image



Curved Blade for Cutting  
Pizza and Fruits etc.

Item No. : 814211



L ( Blade ) = Approx. 110mm T = 2.0mm  
Blade / Ceramic Handle / TPE + Stainless Steel

Designed in Japan

# 【PETTY Cera】

## Soft Grip Ceramic Knife



TPE Soft Grip with Stainless Steel End.  
Refined Design Based on Ergonomics.



Black Blade Available.

Kitchen Knives



Usage Image



Petty Knife Blade for Cutting / Peeling  
Vegetables and Fruits etc.

**Item No. : 814212**

L ( Blade ) = Approx. 110mm T = 2.0mm  
Blade / Ceramic Handle / TPE + Stainless Steel

56 *Designed in Japan*



# 【SANTOKU Cera】

## Soft Grip Ceramic Knife



TPE Soft Grip with Stainless Steel End.  
Refined Design Based on Ergonomics.



Black Blade Available.



Kitchen Knives

Usage Image



SANTOKU Blade for Cutting  
Meat / Fish / Vegetable etc.

Item No. : 814213

L ( Blade ) = Approx. 160mm T = 2.0mm  
Blade / Ceramic Handle / TPE + Stainless Steel

Designed in Japan

# 【GYUTOH Cera】

## Soft Grip Ceramic Knife



TPE Soft Grip with Stainless Steel End.  
Refined Design Based on Ergonomics.



Black Blade Available.



Usage Image



GYUTOH (Chef) Blade for Cutting  
Large Size Meat / Fish / Vegetable.

**Item No. : 814214**

L ( Blade ) = Approx. 180mm T = 2.0mm  
Blade / Ceramic Handle / TPE + Stainless Steel

58 *Designed in Japan*

# (ALMIGHTY Cera)

## Soft Grip Ceramic Knife



TPE Soft Grip with Stainless Steel End.  
Refined Design Based on Ergonomics.



Black Blade Available.



Kitchen Knives

Usage Image



Almighty (Wide) Blade for Cutting  
Large Size Meat / Fish / Vegetable.

Item No. : 814215

L ( Blade ) = Approx. 180mm T = 2.0mm  
Blade / Ceramic Handle / TPE + Stainless Steel

Designed in Japan

# 【BASIC Cera】

## Soft Grip Ceramic Knife



Real High Quality Ceramic Kitchen Knife  
- No Rust , Extra Fine Sharpness  
- No Need to Sharpen in Case of Normal Use

TPE Soft Grip  
for Easy Fit & Non - Slip.



### All Line Up

PIZZA-110 No.814201

PETTY-110 No.814202

SANTOKU-160 No.814203

GYUTOH-180 No.814204

ALMIGHTY-180 No.814205



**Item No. : 814203**

L ( Blade ) = Approx. 160mm T = 2.0mm  
Blade / Ceramic Handle / TPE + ABS

60 *Designed in Japan* Patented US/D691419S

# 【POCKET Cera】

## Folding Ceramic Knife



Folding Type  
- Useful in Variety of Situations.  
BBQ / Fishing / Peeling etc.



Kitchen Knives

- Pure Purple 
- Deep Magenta 
- Dark Red 
- Golden Yellow 
- Emerald Green 
- Vivid Orange 
- Turquoise Blue 
- Charcoal Gray 
- Pastel Violet 
- Pearl Yellow 
- Lime Green 
- Mint Blue 

**Item No. : 814220**

L ( Blade ) = Approx. 70mm T = 1.0mm  
Blade / Ceramic  
Handle / ABS ( Metallic Coated )

Designed in Japan

# Peelers

## Selection

Legends ( Marks ) for Multi Function Peelers

BLADE TYPE = Wide =



BLADE TYPE = Regular =



## Usage Idea



### Shredding Cabbage < with Peeling Blade >

If You Slice the Layer of Cabbage by our Peeler , You Can Make Julienne of Cabbage Speedy & Nicely.



### Slice Onion / Cucumber < with Peeling Blade >

Same as Above Cabbage Shredding, If You Use Our Peeler Slice to the Layer of Onion, You Can Make Slice of Onion Speedy & Nicely.



### Slicing Radish < with Wide Peeling Blade >

By using our Wide Peeling Blade to Radish, You Can Make the Radish Paper for Roll Salad etc.



### Removing Bud

Each Peeler Have Small Scoop on the Side of Body to Remove Bud from Potato etc.

# (WIDE)

## Soft Grip Wide Peeler

### BLADE TYPE OPTION



Extra Light Weight Wide Peeler  
Blade Option  
- Peeling / Shredding / Cheese Slicing



Different Ways (Peeling Blade)



Shredding  
(Cabbage)



Slicing  
(Onion / Radish)

Item No. : 899210

L = 160mm W = 110mm

Blade / Stainless Steel Body / ABS( High Impact ) Grip / TPR

Designed in Japan

Patented US/PAT.P. EU/002300228

63

# Wide CRYSTAL

## Soft Grip Wide Peeler

### BLADE TYPE OPTION



Extra Light Weight Wide Peeler  
Blade Option  
- Peeling / Shredding / Cheese Slicing



### New Color Edition



Item No. : 899211

L = 160mm W = 110mm

Blade / Stainless Steel Body / ABS( High Impact ) Grip / TPR

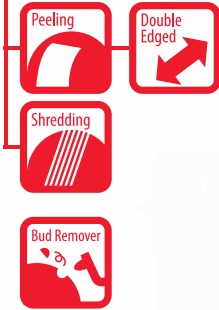
Peeler



# (Vertical DOLPHIN)

## Animal Peeler

**BLADE TYPE OPTION** Regular Size Blade - Peeling / Shredding



Peeler



Different Ways ( Peeling Blade )



**Item No. : 945509**

L = 170mm W = 40mm  
Blade / Stainless Steel Body / ABS( High Impact )

*Designed in Japan*

# Standard DOLPHIN

## Animal Peeler

BLADE TYPE OPTION Regular Size Blade - Peeling / Shredding



Peeling



Double Edged



Shredding



Bud Remover



Special

Ergonomic  
Designed Grip



Item No. : 715509



L = 160mm W = 60mm

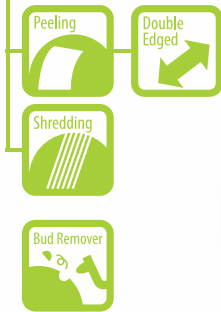
Blade / Stainless Steel Body / ABS( High Impact )

Peeler

# 【PANDA】

## Animal Peeler

BLADE TYPE OPTION Regular Size Blade - Peeling / Shredding



Peeler

Item No. : 885847



L = 155mm W = 65mm  
Blade / Stainless Steel Body / ABS

Designed in Japan

# 【TIGER】

## Animal Peeler

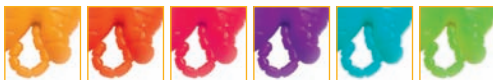
BLADE TYPE OPTION Regular Size Blade - Peeling / Shredding



Hole for Hanging



Item No. : 845701



L = 145mm W = 70mm  
Blade / Stainless Steel Body / ABS

# 【BEAR】

## Animal Peeler

**BLADE TYPE OPTION** Regular Size Blade - Peeling / Shredding



Peeler

**Item No. : 875301**



L = 145mm W = 70mm  
Blade / Stainless Steel Body / ABS

*Designed in Japan*

# (SUNFLOWER)

## Standing Peeler

BLADE TYPE OPTION Regular Size Blade - Peeling / Shredding



Peeling



Double  
Edged



Shredding



Bud Remover



Hygienic  
Standing Type



Item No. : 849114

L = 160mm W = 70mm

Blade / Stainless Steel Body / ABS( High Impact )

70

Patented US/PAT. P. EU/002430801-0001

Designed in Japan

# (ANODIZED)

## Micro Plated Metal Peeler

BLADE TYPE OPTION Regular Size Blade - Peeling / Shredding



Micro Plated (Anodized)  
Metal Frame Body  
- Anti Rust / Strong / Light Weight



Item No. : 666101



L = 135mm W = 70mm

Blade / Stainless Steel Handle / Aluminum (Anodized) + PC

Designed in Japan

# (Y-SHAPE)

## Non-Slip Grip Peeler

BLADE TYPE OPTION Regular Size Blade - Peeling / Shredding



Peeling



Double  
Edged



Shredding



Bud Remover



Special

Large Hanging Hole



Item No. : 944005



L = 150mm W = 70mm

Blade / Stainless Steel Body / ABS + TPR

Peeler



# 【HANDY】

## Mini Peeler with Grater

**BLADE TYPE OPTION** Regular Size Blade - Peeling / Shredding



Special Function of Body  
- For Grating  
Ginger, Garlic etc.



**Item No. : 944407**



L = 105mm W = 70mm  
Blade / Stainless Steel Body / ABS

Peeler

# Kitchen Tools

## Selection

### Rice Spoon / Serving Spoon



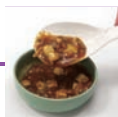
#### < Non-Stick Emboss >

Because of Special Designed Non-Stick Emboss of Surface, Rice is very hard to Stick on Spoon.



#### < Flat Paddle Type >

Traditional Japanese Style of Rice Spoon, Suitable for Serving Rice into a Bowl, Stirring Fried Rice etc.



#### < Deep Spoon Type >

Deep Serving Spoon for Multi Purpose Use. For Rice / Stew / Curry / Salad / Soup, Every kinds of Gravy Food etc.



#### < Standing Grip >

Hygienic Standing Grip to Keep the Spoon & Kitchen Clean.

### Kitchen Tool Series



#### < Fancy Kitchen Tools >

Cute & Useful Shape Kitchen Tools. Jellyfish, Balloonfish and Shark. = 3 types =



#### < Stainless Steel Kitchen Tools >

High Quality Stainless Kitchen Tools. Full Line up & Long Run Standard. = 11 types =



#### < Nylon Kitchen Tools - L >

Large Size Nylon Kitchen Tools. Thick Body is Nylon 66 : Enough Strength & Toughness = 7 types =



#### < Nylon Kitchen Tools - S >

Compact Size Nylon Kitchen Tools. Special Nylon from Japan & Full Shine Polished = 6 types =

# 【FLAT】

## Non-Stick Rice Spoon



Special Embossed Non-Stick Surface.  
- No Need to Dip into the Water  
Before Use.

Usage Image



### All Line Up

- Small - 165 No.907006
- Medium - 185 No.907007
- Large - 205 No.907008
- Ex-Large - 240 No.907009



**Item No. : 907008**

Approx. Size = (S) 165mm , (M) 185mm , (L) 205mm , (XL) 240mm  
Material / PP+Silicon

# 【STANDING】

## Non-Stick Rice Spoon

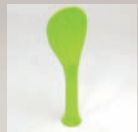


Special Embossed Non-Stick Surface.  
- No Need to Dip into the Water Before Use.

Usage Image



The Rice Spoon  
Can be Standing  
While You are in Other Works.  
Keeping Clean on Your Table.



**Item No. : 907325**

Apporox. Size = 200mm  
Material / PP+Silicon

*Designed in Japan* Patented EU/001849761-0001

# (SERVING)

## Non-Stick Deep Spoon



Special Embossed Non-Stick Surface.  
- No Need to Dip into the Water  
Before Use.

Usage Image



The Deep Serving Spoon  
not Only for RICE,  
but Also for Curry, Stew and Soup etc.



**Item No. : 907019**

Approx. Size = 240mm  
Material / PP+Silicon

76

Patented US/D648603S EU/001849761-0002 *Designed in Japan*

# (HYBRID Standing & Deep)

## Non-Stick Serving Spoon



Special Embossed Non-Stick Surface.  
- No Need to Dip into the Water Before Use.

Usage Image



The Rice Spoon  
Can be Standing  
While You are in Other Works.  
Keeping Clean on Your Table.



The Deep Serving Spoon  
not Only for RICE,  
but Also for Curry, Stew and Soup etc.



**Item No. : 907400**

Apporox. Size = 210mm  
Material / PP+Silicon

Designed in Japan PAT. P. US / EU

# 【S.S. Kitchen】

## Stainless Steel Kitchen Tool Series

11

TYPES

- 1 Ladle
- 2 Slotted Ladle
- 3 Butter Beater
- 4 Slotted Turner
- 5 Fish Turner
- 6 Fry Strainer
- 7 Tofu Strainer
- 8 Egg Beater
- 9 Stew Ladle
- 10 Mini Ladle
- 11 Mini Slotted Ladle



Kitchen Tools



Item No. : 825101

Approx. Size = 280mm

Body / Stainless Steel

Handle / ABS

78 *Designed in Japan*

## Stainless Steel Kitchen Tool Series

**1. Ladle**



No.825101  
Size : 280mm

**2. Slotted Ladle**



No.825111  
Size : 295mm

**3. Butter Beater**



No.825404  
Size : 320mm

**4. Slotted Turner**



No.825303  
Size : 330mm

**5. Fish Turner**



No.825610  
Size : 300mm

**6. Fry Strainer**



No.825606  
Size : 255mm

**7. Tofu Strainer**



No.825505  
Size : 255mm

**8. Egg Beater**



No.825909  
Size : 285mm

**9. Stew Ladle**



No.825202  
Size : 280mm

**10. Mini Ladle**



No.825808  
Size : 210mm

**11. Mini Slotted Ladle**



No.825707  
Size : 210mm



# 【NYLON-L】

## Nylon Kitchen Tool Series

**7**  
TYPES

Nylon  
**66**

- 1 Ladle
- 2 Slotted Ladle
- 3 Butter Beater
- 4 Slotted Turner
- 5 Flat Turner
- 6 Fry Strainer
- 7 Pasta Ladle



Kitchen Tools

**Item No. : 924002**

Approx. Size = 335mm

Body / Nylon66 ( TEMP. 200 C )    Handle / ABS or PP ( Optional )

# [ NYLON-L ]

## Nylon Kitchen Tool Series

1. Ladle



No.924005  
Size : 310mm

2. Slotted Ladle



No.924003  
Size : 310mm

3. Butter Beater



No.924002  
Size : 335mm

4. Slotted Turner



No.924007  
Size : 325mm

5. Flat Turner



No.924001  
Size : 265mm

6. Fry Strainer



No.924006  
Size : 380mm

7. Pasta Ladle



No.924004  
Size : 335mm

### Handle Color Variation



# 【NYLON-S】

## Nylon Kitchen Tool Series

**6**  
TYPES

Nylon  
**66**

- 1 Ladle
- 2 Slotted Ladle
- 3 Butter Beater
- 4 Slotted Turner
- 5 Flat Turner
- 6 Pasta Ladle



Kitchen Tools

**Item No. : 924025**

Approx. Size = 175mm

Body / Nylon66 ( TEMP. 200 C )    Handle / ABS or PP ( Optional )

# [NYLON-S]

## Nylon Kitchen Tool Series

### 1. Ladle



No.924025  
Size : 175mm

### 2. Slotted Ladle



No.924023  
Size : 175mm

### 3. Butter Beater



No.924022  
Size : 175mm

### 4. Slotted Turner



No.924027  
Size : 175mm

### 5. Flat Turner



No.924021  
Size : 125mm

### 6. Pasta Ladle



No.924024  
Size : 180mm

### Handle Color Variation



### Simple Handle (PP) Option



# 【BALLOON FISH】

Fancy Kitchen Tools = Turner =



Cute Kitchen Tool Series

BALLOON FISH Turner

- Strong Body : Nylon 66

- Wide & Thin Body for Easy Turning of  
Pan Cake, Fried Egg etc.



Item No. : 924010

Approx. Size = 330mm

Body / Nylon 66 ( TEMP. 200 C )

Handle / ABS or PP (Optional)

84

PAT. P. US / EU *Designed in Japan*

Kitchen Tools

# (JELLYFISH)

**Fancy** Kitchen Tools = Ladle =



Cute Kitchen Tool Series  
JELLYFISH Ladle

- Strong Body : Nylon 66
- Flat Edge of Ladle for Easy Scooping at the Bottom of Pot.



Kitchen Tools

**Item No. : 924009**



Approx. Size = 305mm  
Body / Nylon 66 ( TEMP. 200 C )    Handle / ABS or PP (Optional)

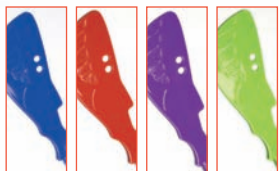
*Designed in Japan* PAT. P. US / EU

# 【SHARK】

**Fancy** Kitchen Tools = Wide Butter Beater =



Cute Kitchen Tool Series  
SHARK Butter Beater  
- Strong Body : Nylon 66  
- Wide Paddle for Easy Stirring  
Pilaf, Fried Foods etc.



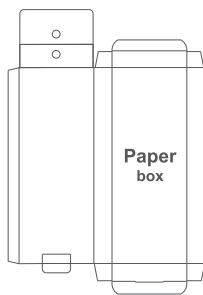
**Item No. : 924011**

Approx. Size = 310mm  
Body / Nylon 66 ( TEMP. 200 C )    Handle / ABS or PP (Optional)

# PACKAGING STYLE = Buyer's Option =

We Have Many Options of Packaging Style, You Can Choose the Package Plan to Fit Your Market / Selling Style / Image / Favorite and Cost.  
We Will Support You to Make the Best Packaging Plan.

## FULL PAPER BOX



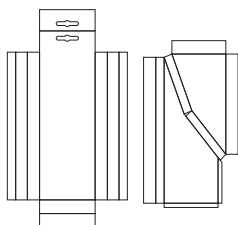
## CLEAR BOX & TRAY



## WINDOW BOX



Paper box & tray

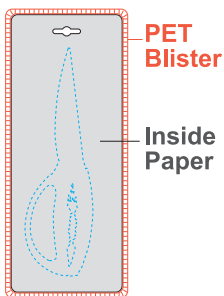


+ PET Clear Sleeve

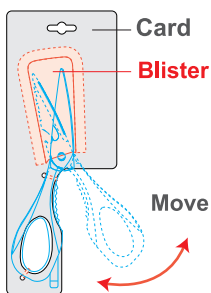


# PACKAGING STYLE = Buyer's Option =

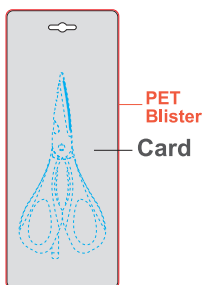
## DOUBLE BLISTER



## "TRY ME" HEAT STAMP



## SLIDE BLISTER

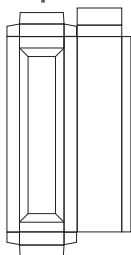


# PACKAGING STYLE = Buyer's Option =

## WINDOW BOX



### Paper Box

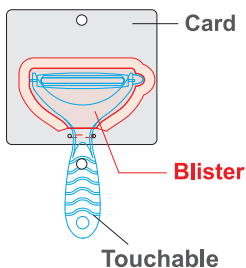


+ PET  
Tray  
└ Clear  
Velvet  
& Sleeve

## CLEAR BOX & TRAY

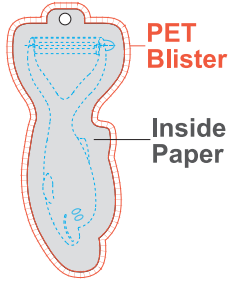
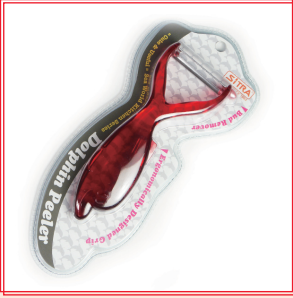


## "TRY ME" HEAT STAMP

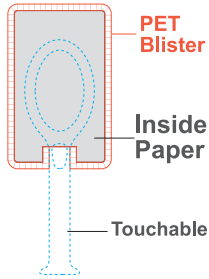


# PACKAGING STYLE = Buyer's Option =

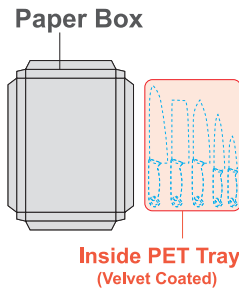
## DOUBLE BLISTER



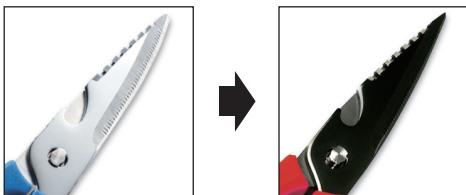
## HALF DOUBLE BLISTER



## DELUXE BOX SET



## Blade Coating = Buyer's Option =



### The Black Titanium Coating

Black Titanium Coating is Our Original Technology First in the World. Special High Resistance against Chemical Reaction and Abrasion.

Then, The Black Titanium Coated Blade have the Features ;

- ANTI-RUST
- FINE SHARPNESS
- LONG LIFE

All Stainless Steel Blade, You Can Choose This Option to Make the Products Special Valued High Grade.

## Color Select = Buyer's Option =

### Your Original Color

If Your Order Quantity is Enough Large, You Can Select Your Original Color of Grip or Body by Using Pantone No.

We will Try to Match the Color as per Your Selected Pantone No.

Please feel free to Talk about the Color at First.



## OEM Logo = Buyer's Option =

### Logo on the Blade

You Can Put the Logo Mark of Your Brand on the Products.

Especially, the Logo on the Blade ( Stainless Steel / Ceramics )

is not Ink Printing , but The Laser Engraving.

Never Come out & Dish Washer Safe.

